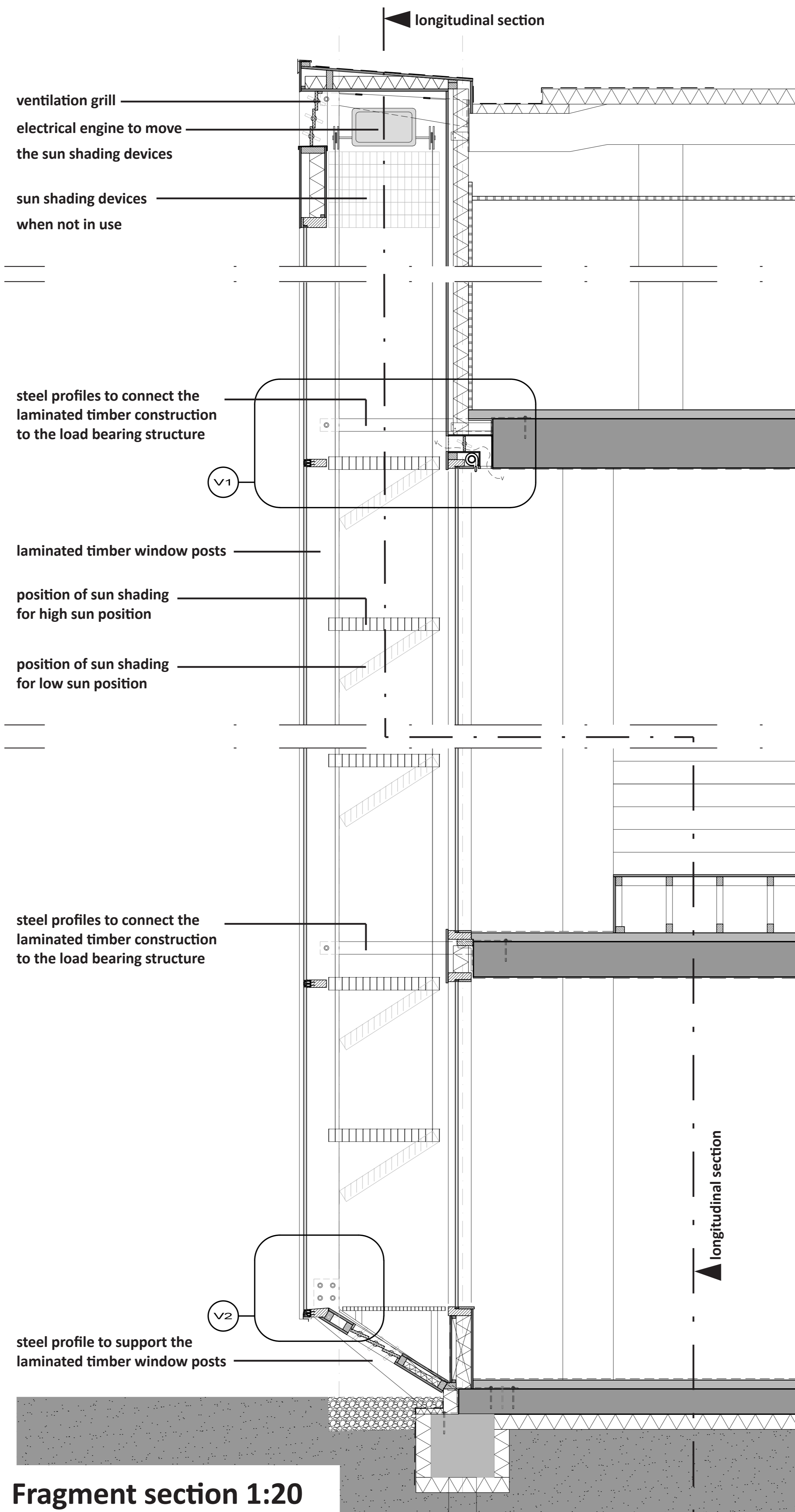
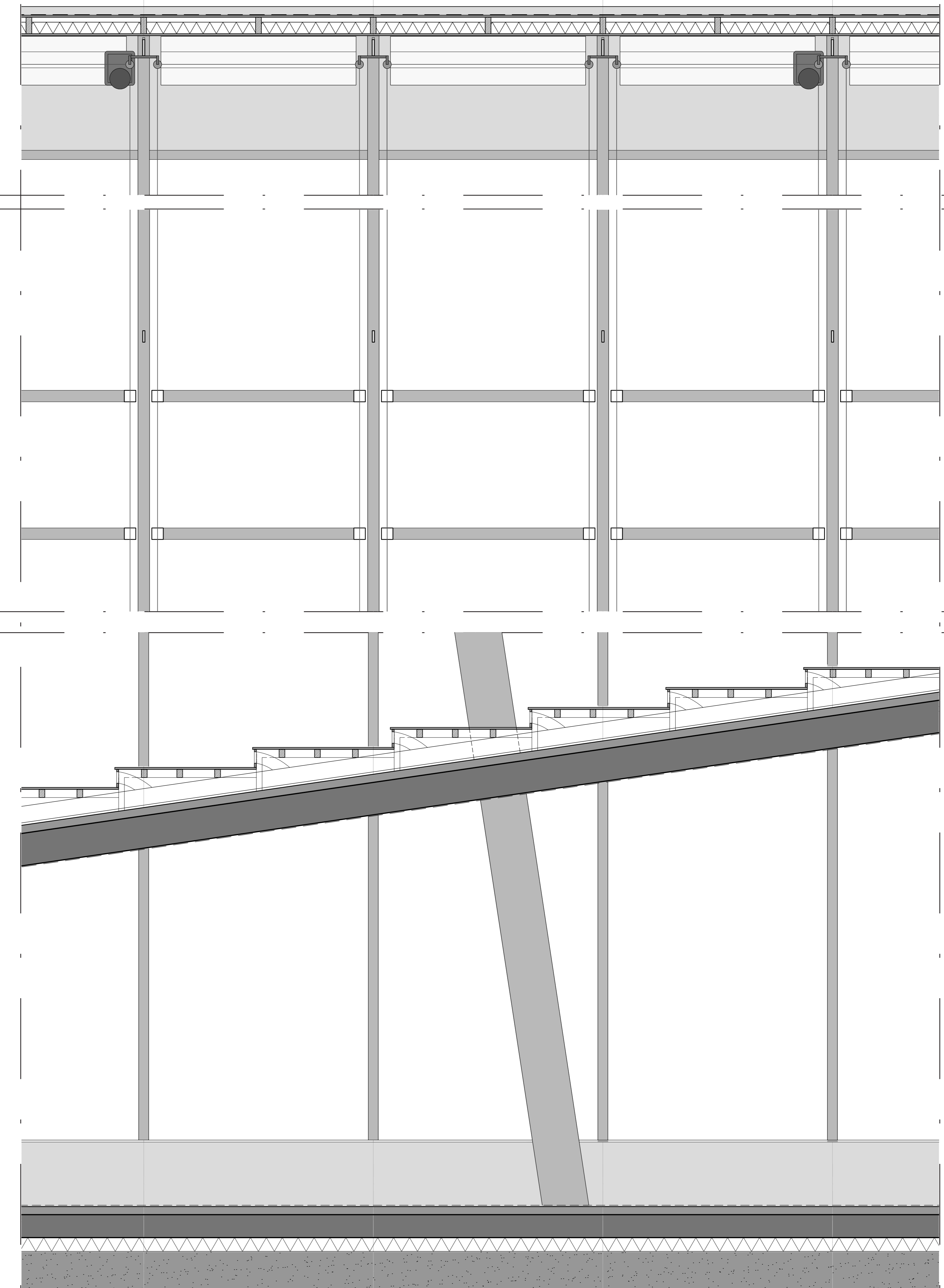


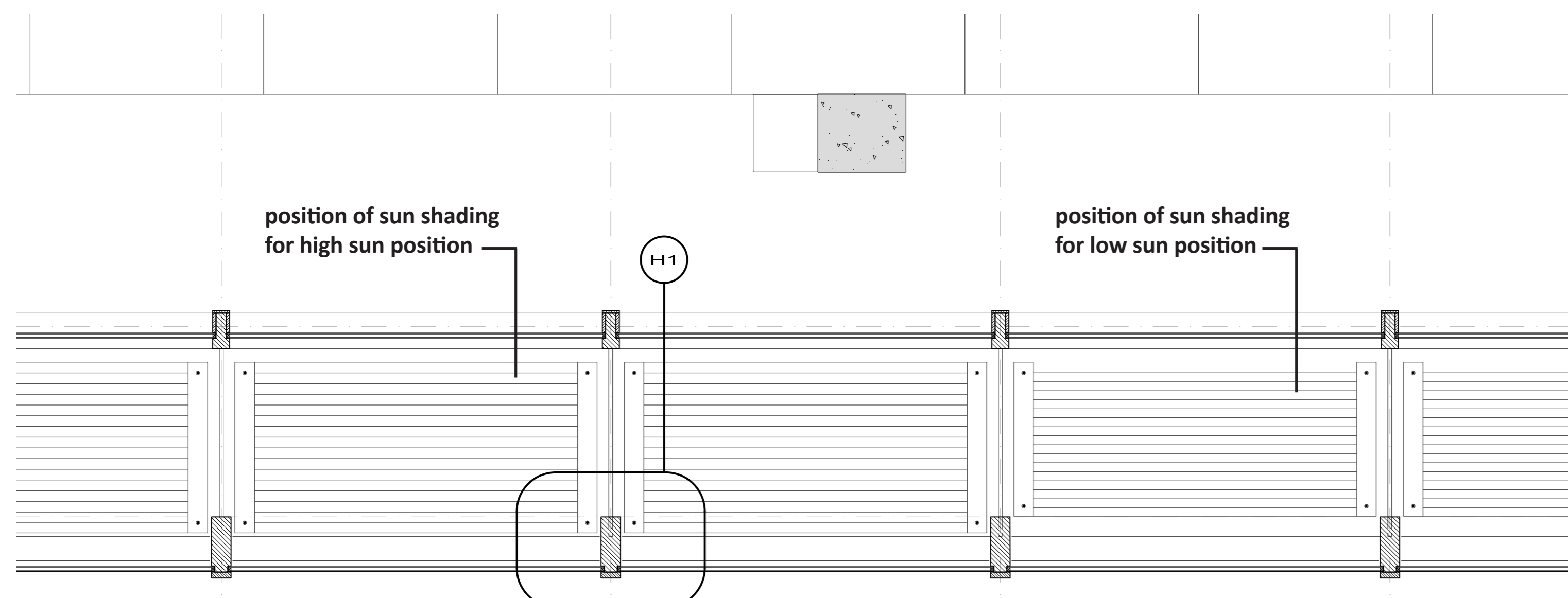
Elevation 1:20



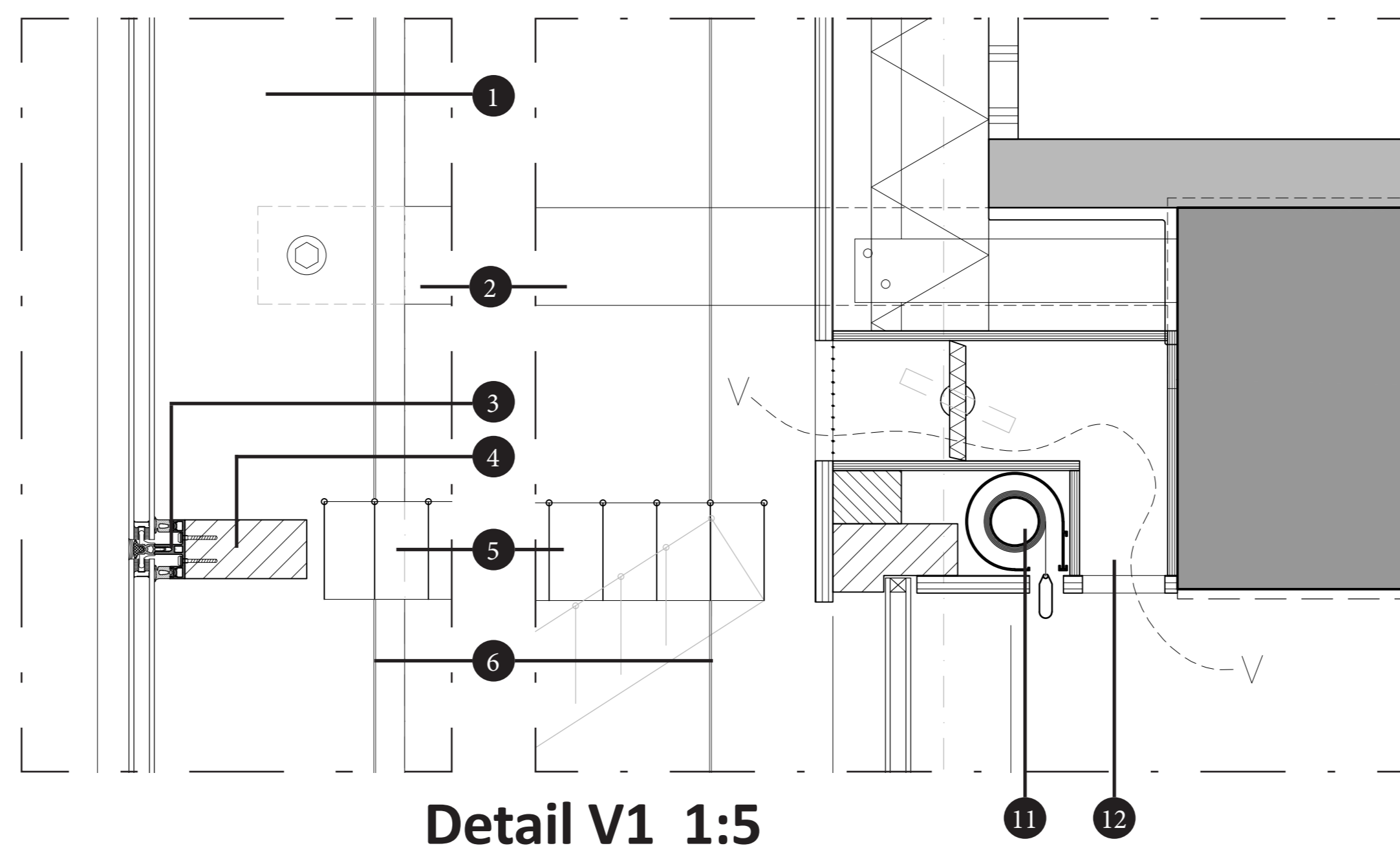
Fragment section 1:20



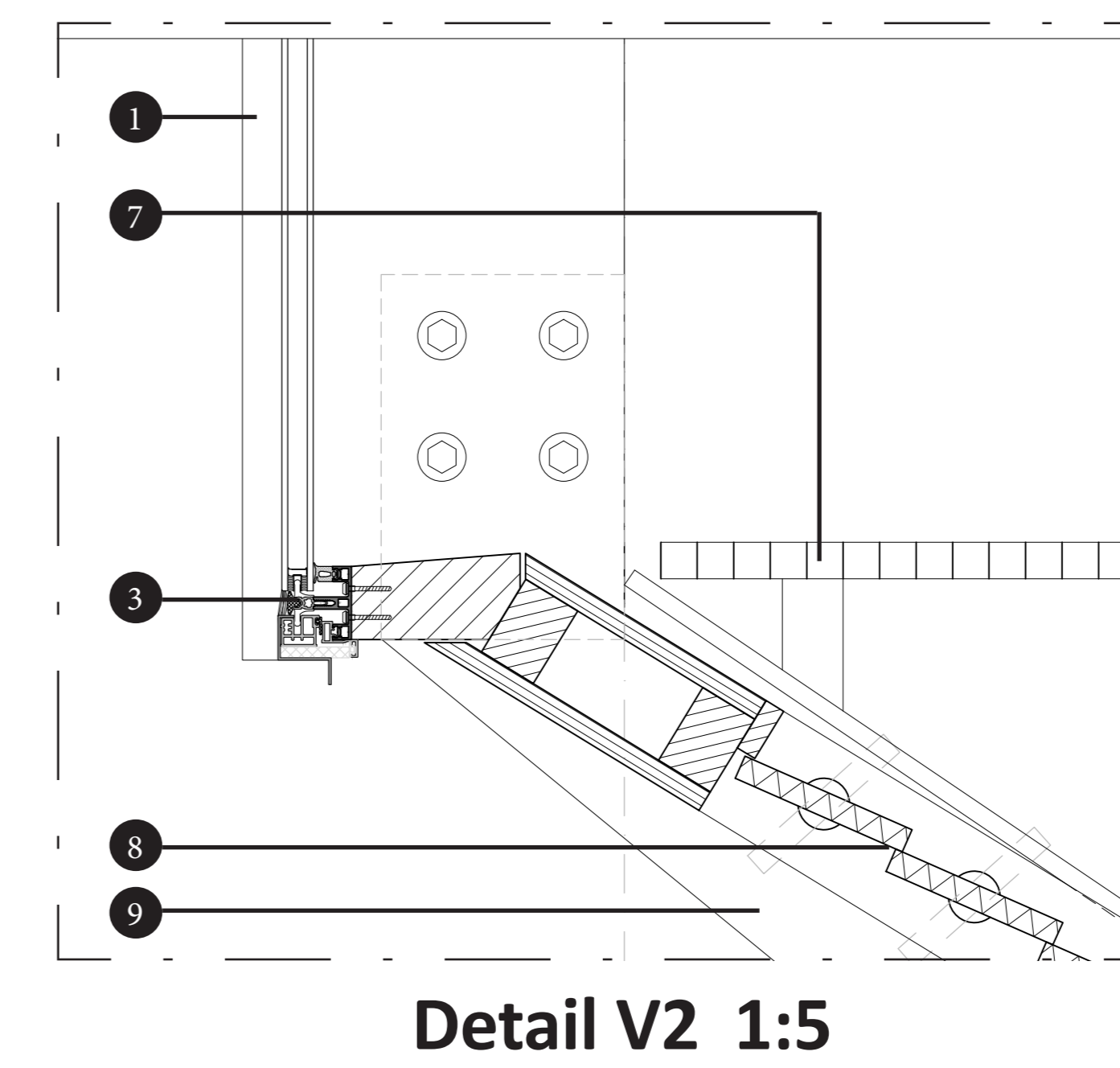
Longitudinal section 1:20



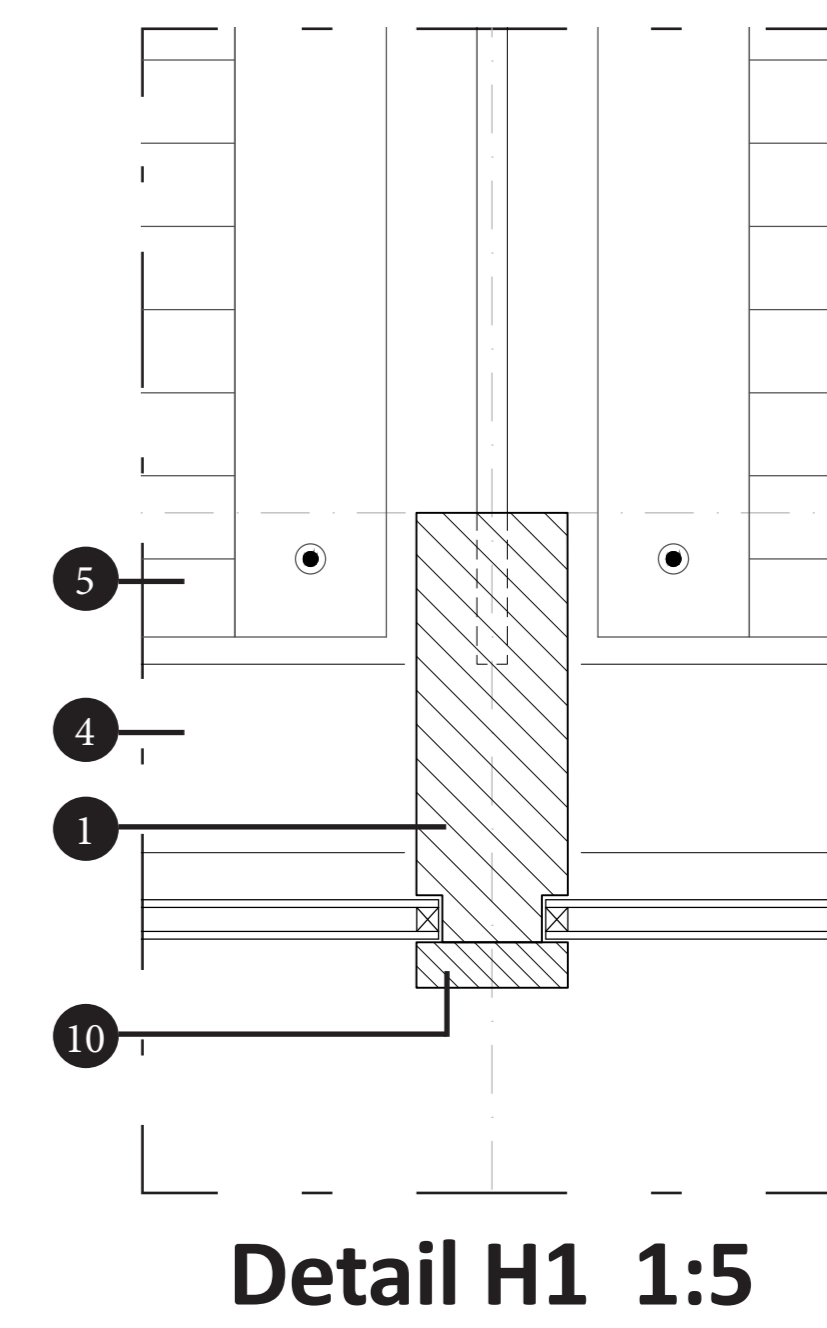
Fragment plan 1:20



Detail V1 1:5



Detail V2 1:5



Detail H1 1:5

- 1: Laminated timber window posts 100x300mm
- 2: Steel strip 20x100mm
- 3: Aluminium glass profiles
- 4: Timber profile 125x60mm
- 5: Sun shading device with vertical lamellas
- 6: Steel cables
- 7: Steel grating floor (for maintenance in the cavity)
- 8: Ventilation grill with automatic shutters
- 9: Steel profile
- 10: Timber glazing fillet
- 11: Roll up curtain to blind the auditorium
- 12: Ventilation grill